

# Soul Tapware

## INSTALLATION INSTRUCTIONS

---

Soul Basin Mixer	page 2
Soul Extended Basin Mixer	page 2
Soul Wall/Bath Spout	page 3
Soul Wall Top Assembly (pr)	page 4



**Products in this manual must by regulation be installed by licensed and registered trade people.**

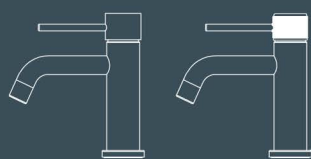


### Water supply requirements

Not recommended for gravity fed water systems or water tanks.

Working Pressure:	<b>350 – 500kpa</b>	<b>(including cold and hot water pressure)</b>
Maximum Pressure:	<b>73psi / 500kpa</b>	
Temperature Rating:	<b>5°C - 65°C</b>	<b>(must not exceed 70°C)</b>

Installation should comply with Australian standard AS/NZS 3500 or relevant local authority requirements.



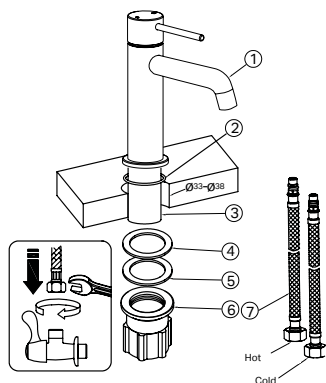
**Soul.**  
& Soul Groove

st.michel  
BATHROOMWARE

phone (09) 837 4276 email [info@stmichel.co.nz](mailto:info@stmichel.co.nz) [stmichel.co.nz](http://stmichel.co.nz)

# Soul Basin Mixer & Soul Extended Basin Mixer

## INSTALLATION INSTRUCTIONS



7	FLEXIBLE HOSE	2
6	LOCK NUT	1
5	GASKET	1
4	RUBBER WASHER	1
3	BRASS THREAD	1
2	O RING	1
1	MAIN BODY GROUP	1
NO#	NAME	QTY

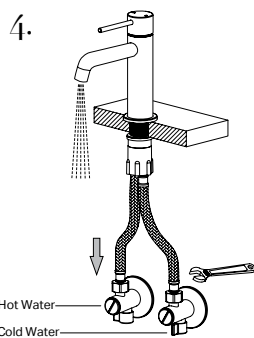
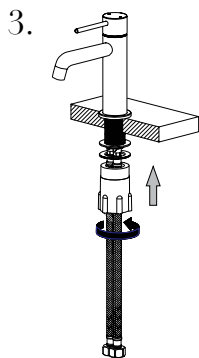
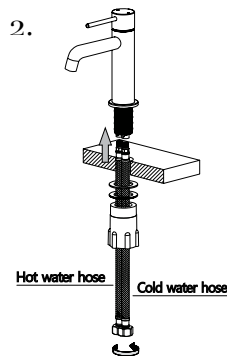
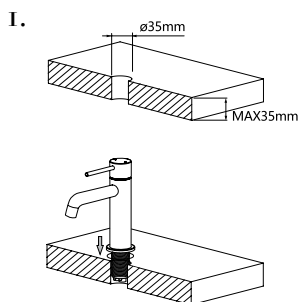
### Before you start

Clean and flush out water supply pipes before installing any of our products to ensure there is no foreign matter in the pipes that could damage your tapware.

Before product installation, confirm whether the installation space meets the requirements according to the product specification drawings.

The installation platform must include a tap hole for the hob fixing of this product. Maximum platform thickness is 35mm.

**The tap hole required for the fixing of this product must be 33mm – 38mm**

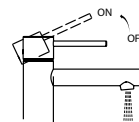


### Main body installation

- UNPACK:** Remove the faucet from the packaging, rotate Lock Nut (6) anti-clockwise to remove from Brass Thread (3).
- GATHER:** Please ensure O-Ring (2), Rubber Washer (4) and Gasket (5) are also removed from Brass Thread (3) and placed in a safe place as they will be required for installation.
- SEAT:** Ensure the Brass Thread (3) is tightly fastened to the Main Body (1). Insert Main Body (1), Brass Thread (3) and O-Ring (2) into tap hole from the top. Correct the installation angle of the Main Body, most commonly facing the waste hole in the basin, then insert Rubber Washer (4), followed by Gasket (5) onto Brass Thread (3) from the underside of the top.
- FASTEN:** Fasten Lock Nut (6) onto Brass Thread (3) by turning it clockwise until all components (5), (4) and (2) are tightly locked to the Brass Thread, and the Main Body is firm. This will create a water-tight seal.

### Water connection

- INSERT:** Install Flexible Hoses (7) from the bottom of the Main Body (through centre of Brass Thread) and turn clockwise to hand tighten. Do not overtighten as this may cause the flexible hose to kink and limit or block the water supply or pressure.
- CONNECT:** Connect the Flexible Hoses to the hot and cold stop valves (water supply) and tighten clockwise with wrench. Ensure faucet lever is the closed position, turn on the hot and cold stop valves to ensure there are no water leaks from the stop valves or the Flexible Hoses.
- NOTE:** Make sure that the hot and cold Flexible Hoses are connected properly, with the hot on the left, and the cold on the right; when standing in front of the faucet.



### Seal test

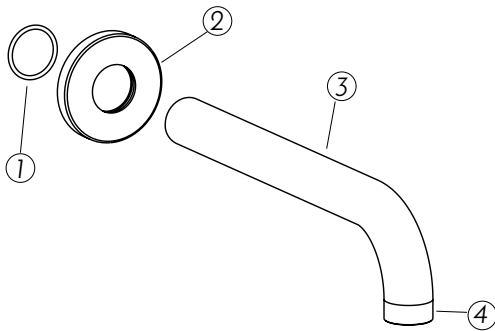
- CLOSED:** Turn on the main water and rotate the cartridge in its closed position, between hot and cold connection (anti-clockwise/clockwise), testing the pressure resistance and sealing performance of the pipeline to ensure there are no water leaks.
- OPEN:** Open the cartridge (up direction), checking for any water leakage from the Main Body and the connections or cartridge. Leaking connections are not covered by the warranty, please check and re-fit accordingly.

**st.michel**  
BATHROOMWARE

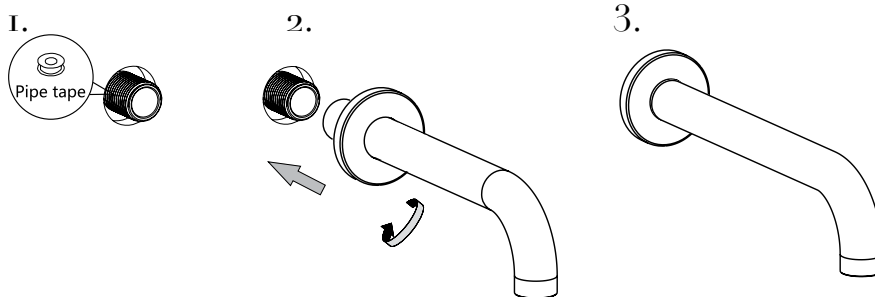
phone (09) 837 4276 email info@stmichel.co.nz stmichel.co.nz

# Soul Wall/Bath Spout

## INSTALLATION INSTRUCTIONS



NO#	DESCRIPTION	QTY
4	AERATOR	1
3	SPOUT	1
2	BACK PLATE	1
1	O-RING	1

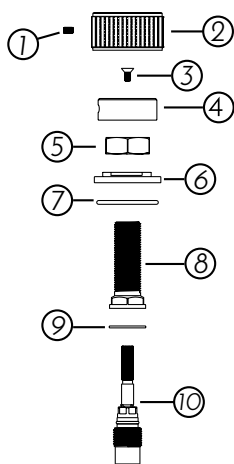


### Main body installation

- PREPARE:** Apply proper amount of PFTE TAPE on the threaded wall outlet.
- CONNECT:** Install Back Plate (2) and O-Ring (1) over Spout (3); allowing suitable working space. Fasten Spout (3) onto threaded wall outlet by turning clockwise until tight and spout outlet is facing downward and straight.
- TRIM:** Gently slide Back Plate (2) against finished wall. The rubber O-Ring will keep into place. The rear of the Back Plate can also be fixed with non acidic silicone or double-sided adhesive.

# Soul Wall Top Assembly (pair)

## INSTALLATION INSTRUCTIONS



10	1/2 TURN CERAMIC SPINDLE	2
9	FIBRE WASHER	2
8	SPINDLE LOCK NUT	2
7	LARGE FLANGE O-RING	2
6	LOCK FLANGE	2
5	CUT-OFF GAUGE	2
4	HANDLE ADAPTOR	2
3	FLAT SCREW	2
2	HANDLE	2
1	GRUB SCREW	2
NO#	DESCRIPTION	QTY

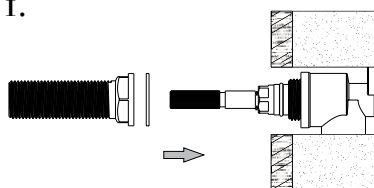


## Before you start



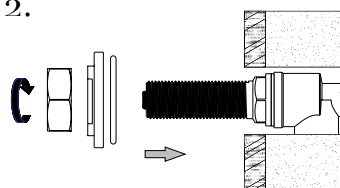
It is important to determine the finished wall depth for this product.  
The embedded depth distance recommended is 38mm - 65mm.

1.



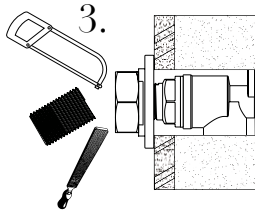
Screw Ceramic Spindle (10) into wall body. Insert Fibre Washer (9) and Spindle Lock Nut (8). Fasten.

2.



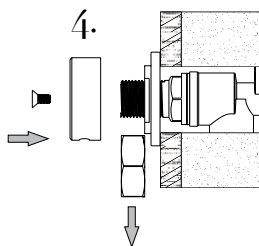
Insert Large O-Ring (7) and screw Lock Flange (6) and Cut-Off Gauge (5) tightly onto Spindle Lock Nut (8).

3.



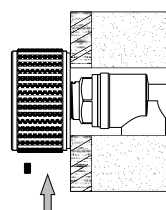
Saw off excess thread using Gauge as indicator and file edges

4.



Remove Gauge and insert Handle Adaptor (4) and screw tight (3).

5.



Insert Handle (2) and fasten with Grub Screw (1) firmly.

st.michel  
BATHROOMWARE

phone (09) 837 4276 email info@stmichel.co.nz stmichel.co.nz